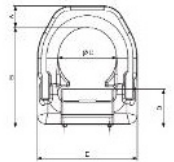
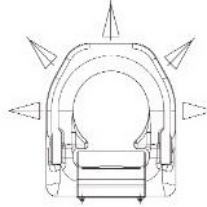




Lashing ring SPLB

- Inele de ancorare sudabile
- Puncte de ancorare, inele de ancorare cu fixare prin sudare cu o singura baza – SPLB/ Grad 10
- Inel pentru ancorare sudabil.
 - Coeficient de siguranta 2
 - Inel testat 100% magnafux
 - Referințe normative care urmează să fie luate în considerare pentru alegerea și poziționarea suportului 831: EN 12640 – EN 75410 – EN 12195/1
 - A nu se utiliza la ridicarea sacinilor si/ sau persoanelor



DATE TEHNICE

- Ring to be welded for lashing.
- - Safety coefficient 2
- Ring tested 100 % magnaflux
- Directive references to consider to choose and position bracket 831: EN 12640 – EN 75410 – EN 12195/1

Maße / Measurements

Artikel ohne Feder Article without spring	Artikel mit Feder Article with spring	Zurkraft Capacity	A	B	C	D	E	F	G	H	Dicke der Schweißnaht Welding thickness	Gewicht ca. kg Weight approx.
31804003	31804003F	3000	14	65	38,0	25	66	16,0	31,0	79	HV 5-3	0,39
31804005	31804005F	5000	16	75	45,0	27	77	18,0	34,5	91	HV 7-3	0,59
31804008	31804008F	8000	18	84	51,0	32	87	20,0	40,0	102	HV 8+3	0,87
31804013	31804013F	13400	24	117	67,3	44	115	26,0	58,5	141	HV 12+4	2,23
31804020	31804020F	20000	31	126	67,0	55	129	28,5	70,5	157	HV 16+4	3,33
31804032	31804032F	32000	45	174	100,0	69	190	42,0	87,0	219	HV 25+6	9,28