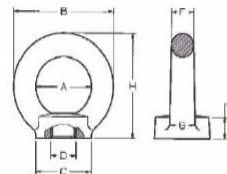


DIN 582 – APM2

- Inel de ridicare piulita DIN 582, Ochet/ inel de ridicare tip mama DIN 582, Inel de ridicare cu filet interior DIN 582, Piulita inelara DIN 582 – APM2
- In completarea sistemelor de dispozitive de ancorare compania noastra de asemenea furnizeaza inele clasice de ridicare surub DIN 580 in varianta standard din otel carbon si in varianta din otel inoxidabil pentru a fi utilizate permanent in mediul exterior si/ sau cel marin si in plus fata de acestea este de asemenea si varianta din otel aliat clasa 8.8. Inelele de ridicare surub DIN 580 prin constitutia lor, au o serie de restrictii, datorita dificultatii orientarii in directia de incarcare trebuie reduca drastic capacitatea de ridicare, care fara o evaluare atenta de catre utilizator pot expune lucratorii la riscuri foarte mari.
- Prin urmare, este recomandabil utilizarea acestor inele de ridicare doar in operatii unde tipul de incarcare si manevrarea in zona de lucru duce la o expunere redusa la riscuri de strivire, soc si accidente ale persoanelor in general.



DATE TEHNICE

- Together with anchorage device kits also supplies the classic eye nut DIN 582 in the standard version in carbon steel and in the stainless steel version to be used in permanent outdoor environments and/or marine ones and in addition to these there is also the version in alloy steel class 8.8.
- Eye nuts DIN 582 due to the way they are made have some limits, that is difficult to orient in the direction of the load the dramatic reduction to the capacity out of alignment without a careful evaluation by the user may expose workers to very high risks and are difficult to prevent.
- With this in mind we recommend the use of these eyebolts only in operations where the type of load and movements of the work area generate low exposure to the risk of crushing, impacts and accidents to people in general.

Maße / Measurements

Artikel Article	Abmessung DxL Size DxL	A	B	C	E	F	G	H	SWL ⊥	45° SWL ∧	Drehmoment Tightening couple Nm	Gewicht ca. kg Weight approx.
8350601_	M 6	20	36	20	8,5	8	10	36	90	60	3,5	0,060
8350801_	M 8	20	36	20	8,5	8	10	36	140	100	8,0	0,060
8351001_	M 10	25	45	25	10,0	10	12	45	230	170	16,0	0,100
8351201_	M 12	30	54	30	11,0	12	14	53	340	240	28,0	0,170
8351401_	M 14	30	54	30	11,0	12	14	53	500	350	45,0	0,150
8351601_	M 16	35	63	35	13,0	14	16	62	700	500	70,0	0,260
8351801_	M 18	35	63	35	13,0	14	16	62	930	650	95,0	0,240
8352001_	M 20	40	72	40	16,0	16	19	71	1200	860	135,0	0,410
8352201_	M 22	40	72	40	16,0	16	19	71	1500	1050	182,0	0,360
8352401_	M 24	50	90	50	20,0	20	24	90	1800	1290	230,0	0,750
8352701_	M 27	54	98	62	22,0	22	26	99	2500	1830	343,0	0,800
8353001_	M 30	60	108	65	25,0	24	28	109	3200	2300	465,0	1,400
8353301_	M 33	60	108	65	25,0	24	28	109	4200	3050	632,0	1,270
8353601_	M 36	70	126	75	30,0	28	32	128	4600	3300	814,0	2,030
8353901_	M 39	80	144	85	35,0	32	38	147	6000	4400	1059,0	3,200
8354201_	M 42	80	144	85	35,0	32	38	147	6300	4500	1304,0	3,050
8354501_	M 45	90	166	100	40,0	38	46	168	7800	5500	1638,0	5,000
8354801_	M 48	90	166	100	40,0	38	46	168	8600	6100	1981,0	4,820
8355201_	M 52	100	184	110	45,0	42	50	187	9900	7100	2540,0	7,000
8355601_	M 56	100	184	110	45,0	42	50	187	11500	8200	3000,0	6,690
8356401_	M 64	110	206	120	50,0	48	58	208	16000	11000	4736,0	10,100
8357201_	M 72	140	260	150	60,0	60	72	260	20000	14000	6913,0	46,000

Endzahl "2" = verzinkt; Endzahl "3" = naturschwarz
 Final number "2" = zinc coated; final number "3" = natural black

Numar final „2” = zincat; Numar final „3”= natural negru

Factor de siguranta: 6

Total Race Impex SRL J40/20761/2006 , RO 19794573 , Bucuresti, sector 6 , Bulevardul Uverturii , nr.69A, cod:060933 Mobil:0728305610/ 0728305611 / 0728305612; fax: 0214301206;tel/fax :0314201202 E-mail:info@totalrace.ro;vanzari@totalrace.ro

Website:www.totalrace.ro , www.lanturideridicare.ro , www.chingimacarale.ro , www.benziambalare.ro , www.banadaancorare.rowww.lanturichingi.ro , www.carligemacarale.ro , www.echipamentemacara.ro , www.benebeton.ro , www.clestridicare.ro .