



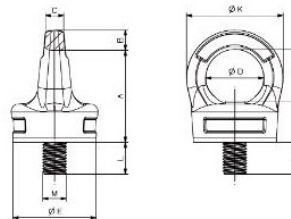
[Cere Ofertă!](#)
[Contact](#)
[Despre noi](#)
[Produce](#)
[Brosuri](#)
[Video](#)
[Info Online](#)
[Promotii](#)
[Certificari](#)
[Noutati](#)
[Website-uri](#)



## Eyebolt twister APTW



- Surub de ridicare cu inel, cu rulmenti cu bile, potrivit pentru rotatii continue – APTW / Grad 10
- Punct de prindere cu fixare prin insurubare.
- Punct de prindere pentru ridicarea sarcinilor potrivit pentru rotirea continua in sarcina in directia axiala de tragere.
- Factor de siguranta 4 in toate directiile de tractiune
- Proiectat, testat si certificat in conformitate cu directivele tehnice GS-MO 1504 – EN 1677
- Potrivit pentru ridicarea în condiții de siguranță, în conformitate cu Directiva Mașini 2006/42/CE
- Poate fi oriatat la 360°
- Testat la 100% magnaflux
- Testat la 20.000 cicluri
- Ideal pentru rotire in sarcina
- Surub prizonier
- Acest dispozitiv este potrivit pentru rotire in sarcina doar la tractiune axiala; inelul de prindere poate fi utilizat in orice alta directie de tragere fara rotire (pentru sarcini vedeti tabelul de referinta)



### DATE TEHNICE

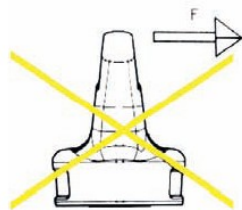
Fastening points for lifting loads suitable for continuous rotation during loading with axial pull.

- Safety coefficient 4 in all loading directions
- Designed, tested and certified in compliance with the technical directives GS-MO 1504 – EN 1677
- Suitable for safe lifting in compliance with the machinery directive 2006/42/EC
- Can be oriented at 360°
- Tested at 100 % magnaflux
- Tested at 20.000 stress cycles

- Ideal for rotation during loading

- Captive screws

- The device is suitable for rotation during loading only with axial pull; the eyebolt can be used in every other pull direction without rotation (for loads see reference table)



(Position which is in compliance with the safety coefficient 4 as per the related technical directives)

Do not exceed during rotation phase loads 50 rpm

Pozitie care este in conformitate cu coeficientul de siguranta 4 cat si cu directivele tehnice asociate  
Nu depasiti viteza maxima de 50 rpm in timpul fazei de rotire in sarcina.

## Maße / Measurements

Artikel ohne Schlüssel Article without key	Artikel mit Schlüssel Article with key	Abmessung DxL Size DxL	M-WLL	A	B	C	D	E	F	K	L	Gewicht ca. kg Weight approx.
31712051	31712051S	M 12	0,75	53,5	11	11,0	34	44	32,0	56	18,0	0,460
31716051	31716051S	M 16	1,50	56,5	13	14,5	39	56	33,0	65	24,0	0,900
31720051	31720051S	M 20	2,50	67,0	14	17,0	42	58	40,0	70	30,0	1,150
31724051	31724051S	M 24	3,20	80,0	18	19,0	52	73	44,5	88	38,5	2,050
31730051	31730051S	M 30	4,50	101,0	22	27,0	62	80	53,0	106	44,0	4,000

## Tragfähigkeiten / WLLs



Artikel ohne Schlüssel Article without key	Artikel mit Schlüssel Article with key	Abmessung DxL Size DxL	0° *	0° 2Stränge 2 legs	90° 1Strang Singleleg	90° 2Stränge 2 legs	0°-45°	45°-60° 2Stränge 2 legs	Asym.	0°-45°	45°-60° 4Stränge 4 legs	Asym.	Drehmoment Tightening couple Nm
31712051	31712051S	M 12	0,75	1,5	0,75	1,5	1,00	0,75	0,75	1,60	1,12	0,75	28
31716051	31716051S	M 16	1,50	3,0	1,50	3,0	2,00	1,50	1,50	3,15	2,25	1,50	70
31720051	31720051S	M 20	2,30	4,6	2,30	4,6	3,22	2,30	2,30	4,83	3,45	2,30	135
31724051	31724051S	M 24	3,20	6,4	3,20	6,4	4,48	3,20	3,20	6,70	4,80	3,20	230
31730051	31730051S	M 30	4,50	9,0	4,50	9,0	6,30	4,50	4,50	9,40	6,70	4,50	465

\* Axialer Zug mit Dauerdrehbewegung unter Last

\* Axial pull with rotation during continuous loading

\* Tragerea axiala cu rotire in timpul ridicarii continue



Special key for sizes from M12 to M30

Artikel Article	Abmessung Size
317S12TW	M 12
317S16TW	M 16
317S20TW	M 20
317S24TW	M 24
317S30TW	M 30

Cheie speciala pentru marimi intre M12 si M30

Total Race Impex SRL J40/20761/2006 , RO 19794573 , Bucuresti, sector 6 , Bulevardul Uverturii , nr.69A, cod:060933 Mobil:0728305610/ 0728305611 / 0728305612; fax: 0214301206;tel/fax :0314201202 E-mail:info@totalrace.ro;vanzari@totalrace.ro  
Website:www.totalrace.ro , www.lanturideridicare.ro , www.chingimacarale.ro, www.benziambalare.ro, www.banadaancorare.rowww.lanturichingi.ro , www.carligemacarale.ro , www.echipamentemacara.ro, www.benebeton.ro, www.clestiridicare.ro .



Copyright © 2010 TOTAL RACE IMPEX SRL . Toate Drepturile Rezervate © Designed by Ruxandra Ionescu