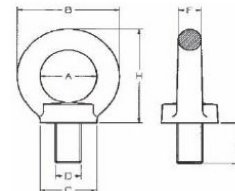


## Eyebolt 8.8 APS8



### APS8/ Grad 8

- Inel de ridicare surub ( inel de ridicare tip tata) 8.8,
- Inel de ridicare cu filet exterior 8.8,
- Ocheti de ridicare cu surub 8.8,
- Surub cu ureche 8.8



Sicherheitsfaktor: 4. Mit Schraubenschlüssel aufschrauben.  
 Safety ratio: 4. To be screwed with appropriatee spanner.

A se insuruba cu o cheie adecvata.

### DATE TEHNICE

#### Maße / Measurements

Artikel Article	Abmessung Size	A	B	C	E	F	H	Gewicht ca. kg Weight approx.
31706001	M 6 x13	25	45	25	10	10	45	0,090
31708001	M 8 x13	25	45	25	10	10	45	0,090
31710001	M 10 x17	25	45	25	10	10	45	0,110
31712001	M 12 x21	35	63	35	14	14	62	0,270
31714001	M 14 x21	35	63	35	14	14	62	0,290
31716001	M 16 x27	35	63	35	14	14	62	0,310
31718001	M 18 x27	50	90	50	20	20	90	0,840
31720001	M 20 x30	50	90	50	20	20	90	0,860
31722001	M 22 x36	50	90	50	20	20	90	0,900
31724001	M 24 x36	50	90	50	20	20	90	0,900
31727001	M 27 x45	60	108	65	24	24	109	1,660
31730001	M 30 x45	60	108	65	24	24	109	1,700
31733001	M 33 x54	70	126	75	26	28	128	2,000
31736001	M 36 x54	70	126	75	26	28	128	2,150
31742001	M 42 x63	80	144	85	30	32	147	4,150
31748001	M 48 x68	90	166	100	35	38	168	6,200
31756001	M 56 x78	100	184	110	38	42	187	8,800
31764001	M 64 x90	110	206	120	42	48	208	12,400



Artikel Article	Abmessung DxL Size DxL	0° 1Strang Single leg	0° 2Stränge 2 legs	0°-45° 2Stränge 2 legs	45°-60° 2Stränge 2 legs	0°-45° 3/4Stränge 3/4 legs	45°-60° 3/4Stränge 3/4 legs	Drehmoment Tightening couple Nm
31706001	M 6 x13	0,4	0,8	0,14	0,14	0,2	0,14	3,5
31708001	M 8 x13	0,8	1,6	0,28	0,28	0,4	0,28	8,0
31710001	M 10 x17	1,0	2,0	0,35	0,35	0,5	0,35	16,0
31712001	M 12 x21	1,6	3,2	0,56	0,56	0,8	0,56	28,0
31714001	M 14 x21	3,0	6,0	1,00	1,00	1,5	1,00	45,0
31716001	M 16 x27	4,0	8,0	1,40	1,40	2,0	1,40	70,0
31718001	M 18 x27	5,0	10,0	1,80	1,80	2,5	1,80	95,0
31720001	M 20 x30	6,0	12,0	2,10	2,10	3,0	2,10	135,0
31722001	M 22 x36	7,0	14,0	2,40	2,40	3,5	2,40	182,0
31724001	M 24 x36	8,0	16,0	2,80	2,80	4,0	2,80	230,0
31727001	M 27 x45	10,0	20,0	3,50	3,50	5,0	3,50	343,0
31730001	M 30 x45	12,0	24,0	4,20	4,20	6,0	4,20	465,0
31733001	M 33 x54	14,0	28,0	4,80	4,80	6,8	4,80	632,0
31736001	M 36 x54	16,0	32,0	5,60	5,60	7,8	5,40	814,0
31742001	M 42 x63	24,0	48,0	8,40	8,40	11,8	8,20	1304,0
31748001	M 48 x68	32,0	64,0	11,20	11,20	15,6	10,90	1981,0
31756001	M 56 x78	36,0	72,0	12,60	12,60	17,6	12,30	3000,0
31764001	M 64 x90	45,0	90,0	15,70	15,70	22,0	15,40	4736,0

Total Race Impex SRL J40/20761/2006 , RO 19794573 , Bucuresti, sector 6 , Bulevardul Uverturii , nr.69A, cod:060933 Mobil:0728305610/ 0728305611 / 0728305612; fax: 0214301206;tel/fax :0314201202 E-mail:info@totalrace.ro;vanzari@totalrace.ro

Website:www.totalrace.ro , www.lanturideridicare.ro , www.chingimacarale.ro , www.benziambalare.ro , www.banadaancorare.rowww.lanturichingi.ro , www.carligemacarale.ro , www.echipamentemacara.ro, www.benebeton.ro, www.clestiridicare.ro .



Copyright © 2010 TOTAL RACE IMPEX SRL . Toate Drepturile Rezervate ® Designed by Ruxandra Ionescu